



An ISO 9001-2015 Certified Company

Enviro~Tech Systems & Engineers

Cleantech Solutions. Anywhere...



Incepted in the Year 2014, we "Enviro~Tech Systems & Engineers" are engaged in Manufacturing, supplying & services a diverse range of Water Treatment Chemical, Cooling Water Treatment Chemical, Boiler Water Treatment Chemical, Swimming Pool Chemical, Water Treatment Plant, Water Analysis and Testing kit and Water Treatment Plants Components / Spare Parts. The offered chemicals are processed under the guidance of skilled team of chemical engineers in compliance with defined industry norms. The entire range of chemicals is appreciated for effectiveness, precise pH value, long shelf life and cost-effectiveness. We strongly believe in maintaining highest standards of quality in our product range as well as other business operations & services. We are instrumental manufacturing and supplying a wide range of Chemicals. Our organization believes in "Success is result of hard work."



Our Products :

RO Chemicals

1. RO Antiscalant Chemicals
2. RO Membrane Cleaning Chemicals
3. SMBS Chemicals
4. RO PH Booster Chemicals



Cooling Tower Treatment Chemicals

1. Cooling Water Descaling Chemicals
2. Corrosion Inhibitor
3. Algaecide/Biocide
4. Descaling Chemicals
5. Bio Dispersant
6. Chiller Water Chemical

Boiler Water Treatment Chemical

1. Oxygen Scavenger
2. PH Booster
3. Descaling / Antiscalant Chemical
4. Scale / Corrosion Inhibitor



Water Treatment Chemicals

1. Polyelectrolyte Chemicals
2. Ferric Chloride
3. Deformer Chemicals
4. Feric Sulphate
5. PAC

Swimming Pool Chemicals

1. TCCA - 90 Granule / Tablets
2. Algaecide
3. Sodium Hypochlorite



Our Products :



Water Treatment Plant

1. DM Plant
2. Softner Plant
3. RO Plant
4. ETP
5. STP



Component / Spare Parts

1. RO Dosing Pump
2. RO Cartridge Filter
3. RO Membrane
4. FRP Vessels
5. Flow Meter
5. Bag Filter
6. PH Meter
7. TDS Meter
8. Water Analysis Test Kit
9. Multi Port Valves



Metering Type Plunger Pumps

Application:

Oil & Gas, Chemical, Detergents, Cosmetics, Food & Beverages, Fertilizers, Nuclear, Reactors, Water Treatments, ETP & STP, Paints, Steel, Textiles, Paper, Pharmaceutical, Power, Petroleum, Mine, Institutes, Hospitality, Consultancy Agencies.

FEATURES

- HEAVY DUTY CONSTRUCTION Designed for severe industrial application.
- Easy to maintain
- Low NPSHR Oil bath splash type lubrication for longer life
- High metering accuracy.
- Modular Configurations: Simplex, Duplex, Triplex and Quadriplex
- Turn down ratio 10 : 1
- Accuracy up to $\pm 1\%$
- No Welds on Wet End Parts
- Pumps can be provided with latern ring flushing connections.
- Manual stroke length control standard (optional VFD)
- Micrometric stroke adjustment while pumping.
- Available in variable / fix stroke. Available with jacketing molten liquids .
- Process Temperature from -20°C to 220°C



Sr No.	Pump Model	Pressure (KG/CM2)	Pressure (KG/CM2)
1	MM I	0-200	UP TO 90
2	MM II	0-1000	UP TO 120
3	MM III	0-3000	UP TO 240
4	MM IV	0-6500	UP TO 200

MOC

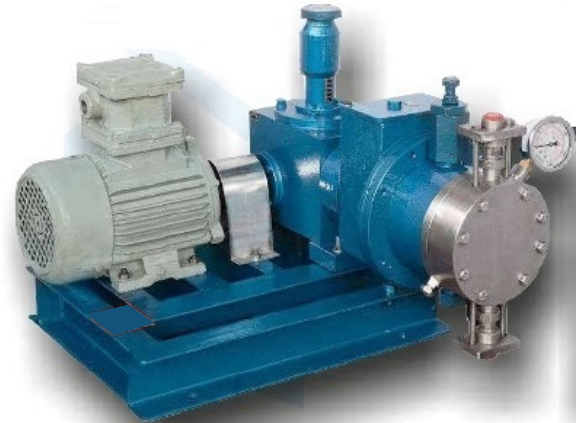
- Reagent head: AISI 316L, AISI 304, AISI 316, Alloy 20, Hastelloy C
- Check Valves: AISI 316L, AISI 304, AISI 316, Alloy 20, Hastelloy C
- Metal Gearbox: Cast Iron

Our Product

HYDRAULIC DIAPHRAGM PUMP

APPLICATION:

Oil & Gas, Chemical, Detergents, Cosmetic, Food & Beverages, Fertilizers, Nuclear, Reactor, Water, Treatment, Paints, Steel, Textiles, Paper, Pharmaceuticals, Power, Petroleum Mine, Institutes, Consultancy Agencies



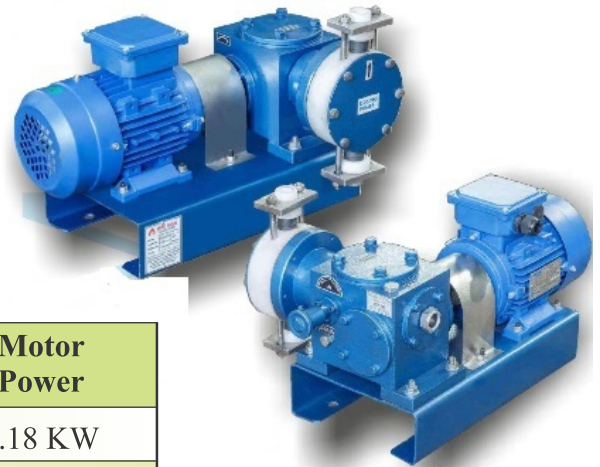
FEATURES

- HEAVY DUTY CONSTRUCTION Designed for severe industrial application.
- Easy to maintain with zero leakages.
- Hydraulically Balanced Sandwich (Double) Diaphragm with Rupture Detection.
- Inbuilt Safety Relief Valve.
- Low NPSHR6.Oil bath splash type lubrication for longer life.
- High metering accuracy.
- Modular Configurations: Simplex, Duplex, Triplex and Quadriplex.
- Turn down ratio 10:1.Accuracy up to $\pm 1\%$.No Welds on Wet End Parts.
- Pumps can be provided with latern ring flushing connections.
- Manual stroke length control standard (optional VFD).
- Micrometic stroke adjustment while pumping.
- Available in variable / fix stroke.Available with jacketing molten liquids.
- Process Temperature from -20°C to 220°C

Mechanically Actuated Diaphragm Pumps

FEATURES

- Simple Design,
- Leakproof & Low NPSHR.
- Flame Proof.
- Oil bath splash type lubrication for longer life.
- Economical & maintenance free.



Sr No.	Pump Model	Capacity (LPH)	Pressure (KG/CM2)	Motor Power
1	MMDP 05	0-50 LPH	6	0.18 KW
2	MMDP 02	0-200 LPH	4	0.37 KW
3	MMDP 01	0-800 LPH	5	0.75 KW

Our Product

Distribution & Collection Systems:

- Standard Systems for all makes of FRP/ Composite Pressure Vessel.
- Composite set of TOP & BOTTOM Distribution Systems for the entire range of tanks from 8" up to 79".
- Suitable for tank opening 2.5", 4" threaded & 6" Flanged.
- Accessories Like. Adaptors, Closures, Vacuum Breakers, Discharges Nozzles Etc.



Bottom Collection Systems:

- For large dia.PSF, ACF, MMF, DMF, Etc.
- Available in 0.2/0.3 mm Silt with a choice variables. Headers & laterals diameters for specific use.
- Easy to install in new & Retrofit Installations.
- Excellent Backwash Properties.
- Design to avoid ingress of sand.



Multiport valve

Sr. no.	Port size		Description	FRP/Composite tank opening
1	3/4" BSP (F)	20 NB	3/4"-MPV-F-TM-2.5	2.5"-8NPSM (Top open)
2	3/4" BSP (F)	20 NB	3/4"-MPV-S-TM-2.5	2.5"-8NPSM (Top open)
3	1"BSP (M)	25 NB	1"-MPV-F-FF-TM-N-2.5/4"	2.5"-8NPSM (Top open)
4	1"BSP (M)	25 NB	1"-MPV-S-FF-TM-N-2.5/4"	2.5"-8NPSM (Top open)
5	1.5" BSP (F)	40 NB	1.5"-MPV-F-SM	4" 8UN(Top & Bottom open)
6	1.5" BSP (F)	40 NB	1.5"-MPV-F-SM	4" 8UN(Top & Bottom open)
7	2" BSP (F)	50 NB	2"-MPV-F-SM	4" 8UN(Top & Bottom open)
8	2" BSP (F)	50 NB	2"-MPV-S-SM	4" 8UN(Top & Bottom open)
9	1.5" BSP (M)	40 NB	1.5"-MPV-F-FF-TM-N-2.5/4"	4" 8UN(Top & Bottom open)
10	1.5" BSP (M)	40 NB	1.5"-MPV-S-FF-TM-N-2.5/4"	4" 8UN(Top & Bottom open)

ROTA METER

A rotameter is a device that measures the flow rate of fluid in a closed tube. It belongs to a class of meters called variable area meters, which measure flow rate by allowing the cross-sectional area the fluid travels through, to vary, causing a measurable effect.



UPVC Filter Housing

All the parts of this series filters are made of UPVC material. The inlet and outlet are in the same line, which connected with the pipe is a 3" union. The distribution system of HPCF filter is distributed from bottom to top. Water is well-proportioned with small strike to cartridges and air is easy to be discharged. The bottom system of HPCF filter is designed together as a whole with the top localizer & closure system. The lid and the body are connected using eyebolts flange method, Ensure a good seal performance and ensure the filter can stand higher pressure. HPCF filter is corrosion resistant; it can be used in SS-none-replace field.



Type	Size	Bag size	In/Out	L	Max. Pressure
CWC-BF-1	Ø225	Ø7" X 32"	FLG: DN50/ ANSI2"	1050mm	105 psi
CWC-BF-2	Ø225	Ø7" X 16"		665 mm	105 psi

UPVC Filter Cartridge Housing

UPVC 10" 3/5 Element Housing
UPVC 20" 3/5 Element Housing
UPVC 30" 3/5 Element Housing
UPVC 40" 3/5 Element Housing

UPVC Bag Filter Housing

UPVC Bag Filter Housing 7×16
UPVC Bag Filter Housing 7×32

An ISO-9001-2015 Certified & NSIC Registered Company.



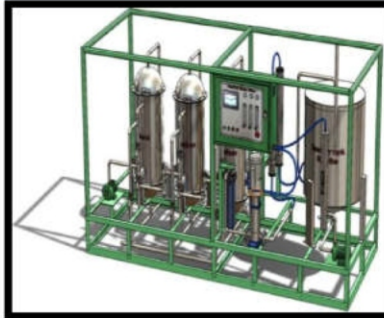
Cleantech Solutions. Anywhere...
 ΓΕΝΙΚΕΣ ΣΕΡΒΙΣΕΣ ΣΤΟ ΠΑΡΑΓΩΓΕΟ



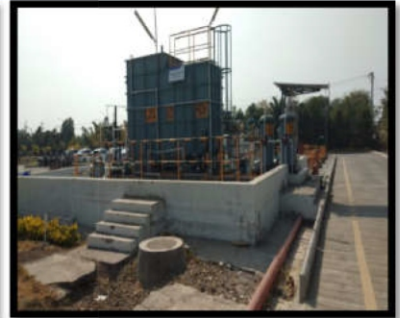
Manufacturer /Exporter/Importer/Industrial Water & Waste Treatment Plants.
 ETP-STP, DM, SOFTNER, RO-Plants & Water & Waste Treatment Chemicals.



Effluent Treatment -PLANT



REVERSE OSMOSIS PLANT



STP-PLANT.



Water Treatment Chemicals



Cooling Tower Chemicals



Demineralization Plant



Water Treatment Spare Parts

OUR CLIENTS:



Our Valuable Client's



Chemical Industry



Pharmaceutical Industry



Metal & Forging Industry



Paper & Pulp Industry



Fertilizer & Agro-Chemical Industry



Hospital



Hospitality Industry



Automobile Industry



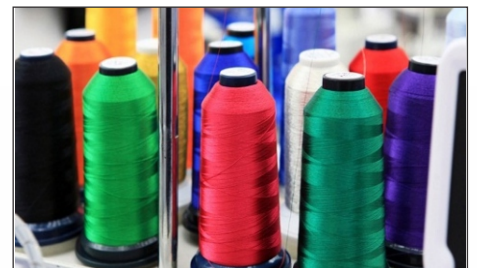
Petro-Chemical & Refinery



Sugar Industry



Power & Energy Sector



Textile Industry



Enviro-Tech Systems & Engineers

An ISO 9001-2015 Certified Company
Cleantech Solutions. Anywhere...

Registered Office: "Nabharaj Nandanvan"-Phase-3,Fourth Floor-D-407,
Opp-Airport-Jalna-Road,Chikhalthana-Aurangabad

Email: info@etseindia.com, envirotechsystemseng@gmail.com

Website: www.etseindia.com